



MANUFACTURING CELL

The Firearm/Defense Industry's Biggest Show in the World = Shot Show, January 14-17th at Sands Expo in Las Vegas. Along with two of our partners, Lehigh Defense and Meaden Precision Machined Products, who specialize in contract work for the firearms industry, we are bringing back the "Manufacturing Cell" to the premier expo of the industry – the Shot Show, 2014.

This **Manufacturing Cell Booth #2057** will be an interactive experience. ***We will demonstrate the advantage of the Eurotech machine for producing gun parts.*** In addition our customers will display their manufacturing capability for the firearms industry. Experts will be on hand to help you find the best solutions for your manufacturing needs, whether it be manufacturing your own parts at the best ROI possible or subcontracting to specialists who use advanced technology and deliver to you quality parts, machined with the processes of the future.



Come see the Eurotech machine that makes the AR15 carrier, bolt, pistol, rifle and shotgun barrels at the Shot Show in Vegas, Jan 14-17, 2014

FREE PROGRAM TRAINING

2014 PROGRAM TRAINING SCHEDULE

APRIL 8, 9, 10 EUROTECH-FANUC, CHICAGO

MAY 20, 21, 22 POLYGIM-MITSUBISHI, FLORIDA

AUGUST 5, 6, 7 EUROTECH-FANUC, NEW ENGLAND

DECEMBER 2, 3, 4 EUROTECH FANUC, FLORIDA

Better Cycle Times = Increased ROI

Eurotech's College Program: for over 20 years we have offered **FREE LIFETIME TRAINING** to our valued customers as well as free engineering phone support. We have found this to be an important factor in helping our customers become profitable. Thousands of CNC machinists have trained at our FREE Eurotech College. By listening to our customers' needs, Eurotech has established a value that delivers more benefits

to our customers than anything else in the industry...

companies such as
G.E., Pitney Bowes,
Parker Hannifin,
Goodrich Aerospace,
Honeywell,
Westinghouse,

Stryker, Timken, Smith Nephew, Textron, Tyco, Festo, Gates, Beretta, Bennelli, Taurus, Remington, Keltec, Infinity, Sako and many others.



Registration: You can register for a class by email, phone or fax. Class seats are reserved on a first-come, first serve basis and limited so please reserve in advance. Email: AngleaS@eurotechelite.com or call 352-799-5223.

****Classes are free to all Eurotech original buyers. **** Class registration is \$350 per day. Students should already have two axis programming ability.

EUROTECH IS THE LEADER IN MULTI-AXIS CNC MACHINING
Win with Technology that Runs Faster, Sleeps Less!



www.EurotechElite.com

info@eurotechelite.com

ph: 352-799-5223 | fax: 352-799-4662

THE TURNING REVOLUTION

December, 2013 Edition

Special Edition

EUROTECH
RUNS FASTER, SLEEPS LESS!



OUR CEO JOE SELWAY, HIS WIFE CHERYL
AND THEIR YOUNGEST DAUGHTER EMILY



OUR PRESIDENT JEFF WALZ, ROY SELWAY
AND ANGELA SELWAY, OUR MACHINE PROCESS TEAM

*We Wish You and Your Family
a Very Blessed Christmas Season.*

-The Eurotech Team

Note from Owner: PLANNING FOR THE NEW YEAR

There was a fantastic article I read in this past months issue of Modern Machine Shop. I found it very helpful in planning for the upcoming new year and thought you might find it helpful as well. In a very visual layout they relay the 2014 capital spending survey and forecast from Gardner Research.

According to the 2014 Metalworking Capital Spending Survey By Gardner, U.S. metalworking facilities will spend \$7.442 billion, an increase of almost 19% over 2013, on new metalcutting equipment next year.

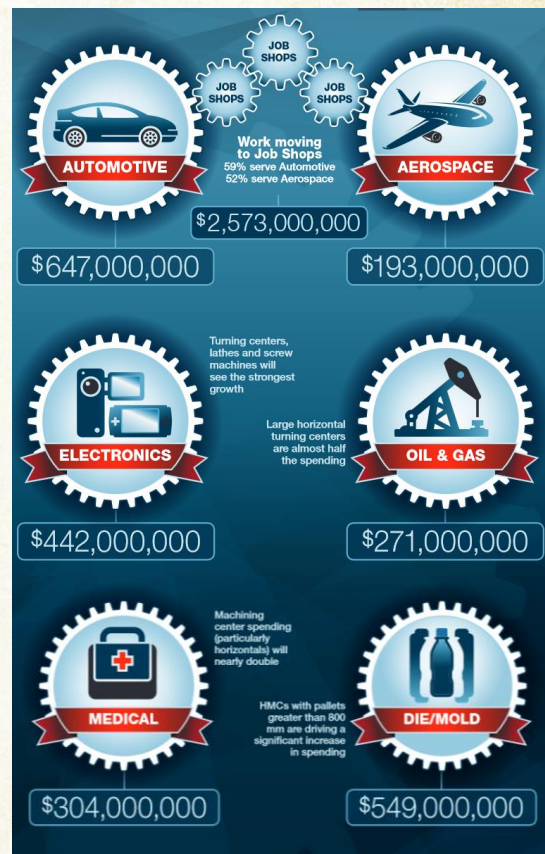
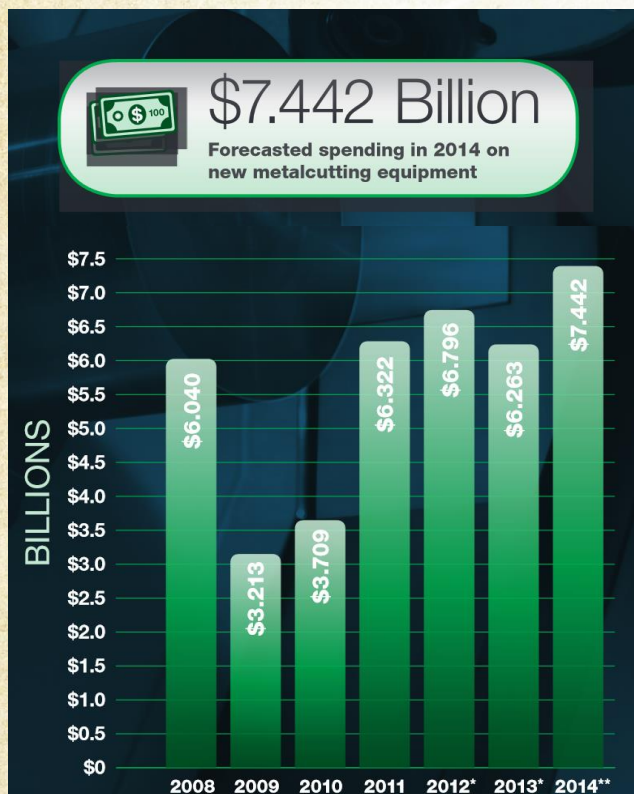
See article details as follows on page 2 and for the full article visit www.mmsonline.com/articles/american-manufacturing-on-the-rise

– Joe Selway, CEO
EUROTECH

American Manufacturing on the Rise

Article From: 12/1/2013 Modern Machine Shop, Steven R. Kline, Jr., Market Analyst from Gardner Business Media

The strength of U.S. manufacturing is driving machine tool sales to their highest levels in more than a decade. Our survey says that machine tool sales should rise to \$7.442 billion in 2014, an increase of 19 percent over 2013.



"We have evolved and have come into new markets. Eurotech multi-axis lathes have helped our company reduce steps in our machining processes while maintaining the high precision aerospace parts require."
-Scott Livingston, President and CEO of Horst Engineering

NEW, RENT A EUROTECH

3-Year Eurotech **Rental** Program

Most Popular Model - the B465SY2 Trofeo

11 axis bar machine, 2 3/4" bar capacity, 10" chuck
35 HP, Y axis on both turrets, Up to 182 tools, up to 48 live tools
Clearshift© sub spindle, C-axis with scales on main and sub spindle.
Other machines available on the 2014 rental program (while stock lasts):

Used Lico LNTS 42 with full 1 year warranty
Used Eurotech B658SLY with full warranty
Used Zeit 42 SLY-B with full warranty
Demo Blitz 16SY2-B
Diamont 42SY2-B
Diamont 42SY2-BXI
Zeit 42SLY-B
Eurotech Rapido B436Y2
Eurotech Multipla B465

U.S. factory activity gauge rises to two-and-a-half-year high

- Reuters/Lockheed Martin/Randy A. Crites/Handout

Workers can be seen on the moving line and forward fuselage assembly areas for the F-35 Joint Strike Fighter at Lockheed Martin Corp's factory located in Fort Worth, Texas in this October 13, 2011 handout photo provided by Lockheed Martin.



A gauge of U.S. factory activity hit a 2-1/2-year high in November and construction spending increased solidly in October, brightening the economic outlook as the year winds down. Monday's reports were the latest indication the economy was gaining strength despite the fiscal headwinds and could bring the Federal Reserve a step closer to scaling back its massive monetary stimulus. "The economy is moving forward at a moderate to strong pace," said Chris Rupkey, chief financial economist at Bank of Tokyo-Mitsubishi UFJ in New York. "This is additional evidence that the economic outlook is positive enough and expected to continue long enough and that the Fed might actually taper in December."

The Institute for Supply Management (ISM) said its index of national factory activity rose to 57.3 last month, the highest reading since April 2011, from 56.4 in October. A reading above 50 indicates expansion in the factory sector. Last month's reading outstripped forecasts for 55.0 and was the sixth consecutive month of growth in the goods-producing sector since a contraction in May. The ISM report mirrored a separate index released by financial data firm Markit, which showed manufacturing rebounding to a 10-month high in November.

"It's not too late."

INVEST IN A NEW EUROTECH. GET A BIG WRITE-OFF in 2013

Thanks to IRS Section 179 of the IRS tax code, many businesses that invest in new equipment will be able to write off up to 100% of the first \$500,000 and up to 50% of the next \$1,500,000 of these purchases on their 2013 tax returns. **The catch?** The qualifying equipment must be purchased and placed into service before December 31, 2013. **The Urgency?** For 2014, all indications are that the Section 179 deduction limitation will be reduced to only \$25,000 and any bonus depreciation deduction will be eliminated. So the December 31, 2013 deadline is approaching quickly.

Get the machine you need plus...
The tax savings you've earned.

Visit www.mfrscapital.com/Tax_Benefits.html for more information about Section 179 and interactive tax calendar.



Eurotech Rapido

1.42" bar capacity, 4" chuck, 15 HP main and sub, Y axis on both turrets, up to 48 tools, superimpose allows 3 tools in the cut. *Fastest Machine on the Market!*



Eurotech Trofeo

2-2 3/4" bar capacity, 8 or 10" chuck, 35 HP, up to 182 tools, Y axis on both turrets, and Clearshift® sub-spindle



Polygim Zeit

1.65" bar capacity, 7.5 main and 3 HP sub, Y axis with full B axis, 2nd slide for sub allows 2 tools in the cut, additional Y axis slide optional